

## PHILLYSTRAN® CORONA SOCKETS

364-2/06

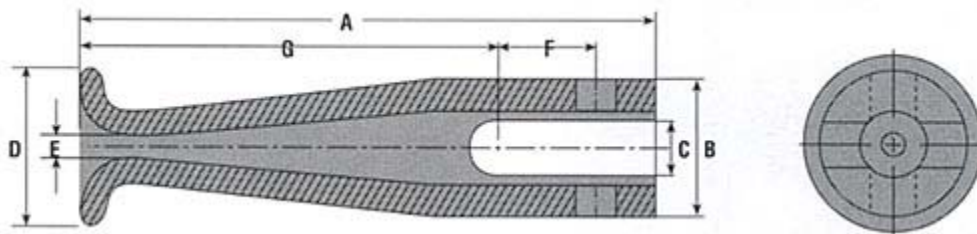
An important feature of Phillystran broadcast tower guying systems is their convenient, reliable and highly efficient terminations. These corona-protected, potted end fittings solve the complex electrical and mechanical problems associated with terminating synthetic tower guys. Phillystran engineers have incorporated years of experience and first-hand knowledge of every kind of broadcast tower into these designs.



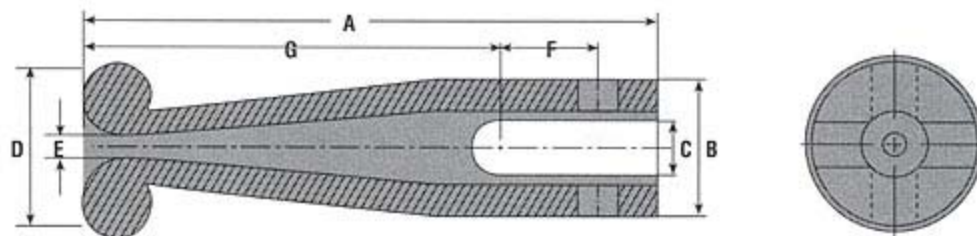
The aramid rope fibers at the end of the guy are spread out and inserted into an end fitting that has no sharp or rough edges where corona might occur. A specially formulated resin socketing compound is poured into the fitting and hardens to form a bond that is as strong as the guy at any point along its length. The socketed ends are sealed with a silastic adhesive to guard against moisture absorption.

Phillystran engineers can recommend the exact end fitting to meet the specifications of any broadcast tower.

Phillystran cut-to-length preassembled systems can replace existing steel guys without essential modification of the tower.



CORONA SIZE	A	B	C	D	E	F	G	PIN DIA	WT (LBS)
CS1200-4000	6.000	1.25	.406	1.875	.266	1.000	4.375	.438	0.5
CS6700-15400	10.000	2.375	.938	2.938	.469	1.688	7.125	.750	2.5
CS20800-35000	14.125	3.406	1.109	4.125	.750	2.500	10.000	1.125	7.5



CORONA SIZE	A	B	C	D	E	F	G	PIN DIA	WT (LBS)
CS42400	14.875	3.750	1.406	4.750	0.797	2.125	10.875	1.125	11.1
CS58300	17.625	4.625	1.719	4.875	1.000	2.500	13.000	1.375	18.0
CS70000-85000	20.000	5.313	1.938	5.125	1.250	2.875	14.625	1.500	25.0
CS105000-130000	25.000	7.500	2.750	7.875	1.531	4.375	16.688	2.500	68.0
CS160000-200000	27.000	7.938	2.750	9.250	2.000	4.438	18.781	2.500	85.0
CS232000-252000	31.500	9.063	2.750	9.875	2.250	4.438	23.250	2.500	115.0

Weights and Dimensions can vary  
**Dimensions in Inches**

**CAUTION: Break Strength:** The breaking strength of a rope is the load at which a new rope will break when tested under laboratory conditions. Break strength should not be mistaken for safe working load. **Safe Working Load:** Because of the wide range of rope use, rope condition and the degree of risk of life or property, it is not possible to make a blanket recommendation for safe working load. It is ultimately dependent on the rope user to determine what percentage of break strength is their own safe working load. **Wear:** Ropes wear out with use; the more severe the usage, the greater the wear. It is often not possible to detect wear on a rope by visible signs alone. Therefore, it is recommended that the rope user determine a retirement criteria for ropes in their application. For assistance in developing safe working load and retirement criteria for each application please call or write Phillystran, Inc.

All printed statements, data and recommendations are based on reliable information and tests, and are presented without any guarantee or warranty. Statements regarding the use of Phillystran, Inc.'s products and processes are not to be construed as recommendations for use in violation of any applicable laws, regulations or patent rights. © All rights reserved.

---

**Phillystran, Inc.**  
151 Commerce Drive  
Montgomeryville, PA 18936-9628 USA

Phone: 215-368-6611  
Fax: 215-362-7956  
E-mail: [info@phillystran.com](mailto:info@phillystran.com)